

**Application**

Upholstery

**Content**

88% Polyester, 12% Graffiti-Free® Tekloom® TPE  
\*Patented, High Performance Fused Textile

**Width**

54"

**Repeat**

N/A

**General Characteristics**

Abrasion : Exceeds 1 Million Double Rubs (Wyzenbeek)†

Hydrolysis Resistance : 15+ weeks

- ISO1419:1995, Method C, Tropical Test

Innovative technology to Combine Textile with the  
Performance of Coated Fabric

Ink/Stain Resistant, Liquid Barrier, Bleach Cleanable

Meets or Exceeds all ACT Heavy Duty Performance Guidelines  
for Upholstery

**Flammability**

CA Bulletin 117-2013, UFAC/NFPA 260-Class 1

IMO A652 (16) 8.2

**Environmental**

DMF Free, PVC/Phthalates Free, PFC Free, FR/Anti-Microbial  
Additives Free

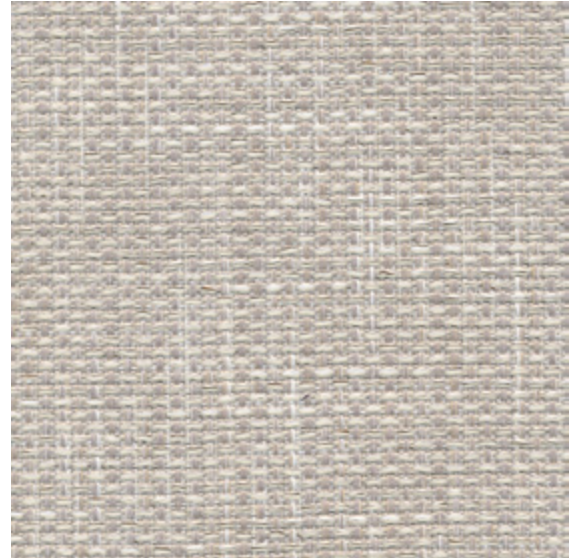
\*Complies with REACH, Prop 65, HHI & CAL 01350

**Maintenance**

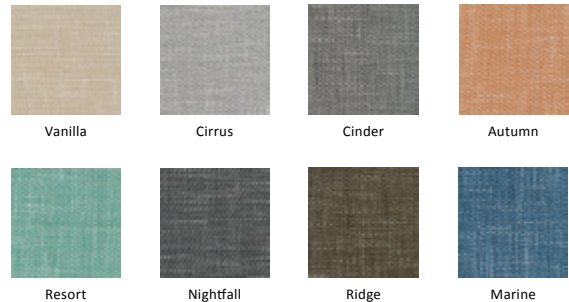
W/S, Bleach (10:1), Dry Care™

**Warranty**

Please refer to our Terms of Sales for warranty information.



Shell



Vanilla

Cirrus

Cinder

Autumn

Resort

Nightfall

Ridge

Marine

† Multiple factors affect fabric durability and appearance retention, including end-user application and proper maintenance. Wyzenbeek results above 100,000 double rubs have not been shown to be a reliable indicator of increased fabric lifespan.