

Application

Upholstery

Content

88% Polyester, 12% Graffiti-Free® Tekloom® TPE

*Patented, High Performance Fused Textile

Width

54"

Repeat

N/A

General Characteristics

Abrasion : Exceeds 1 Million Double Rubs (Wyzenbeek)†

Hydrolysis Resistance : 15+ weeks

- ISO1419:1995, Method C, Tropical Test

Innovative technology to Combine Textile with the Performance of Coated Fabric

Ink/Stain Resistant, Liquid Barrier, Bleach Cleanable

Meets or Exceeds all ACT Heavy Duty Performance Guidelines for Upholstery

Flammability

CA Bulletin 117-2013, UFAC/NFPA 260-Class 1

IMO A652 (16) 8.2

Environmental

DMF Free, PVC/Phthalates Free, PFC Free, FR/Anti-Microbial Additives Free

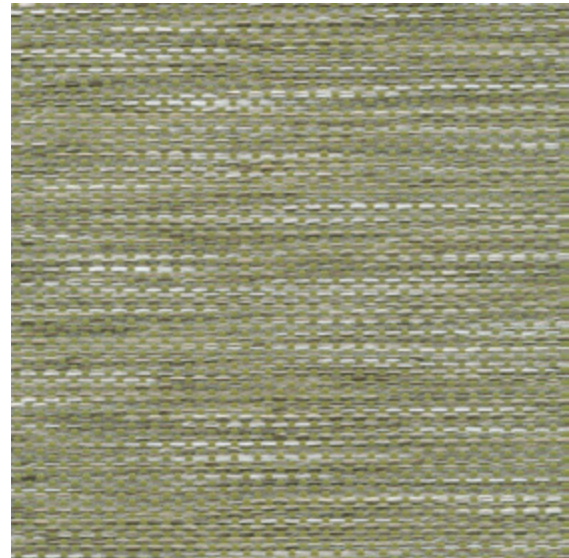
*Complies with REACH, Prop 65, HHI & CAL 01350

Maintenance

W/S, Bleach (10:1), Dry Care™

Warranty

Please refer to our Terms of Sales for warranty information.



GARDEN



DUNE

FOSSIL

BAMBOO

HARBOR



ASH

SADDLE

CADET

SLATE



FLINT

† Multiple factors affect fabric durability and appearance retention, including end-user application and proper maintenance. Wyzenbeek results above 100,000 double rubs have not been shown to be a reliable indicator of increased fabric lifespan.