

**Application**

Upholstery

**Content**

100% Polyurethane (Polycarbonate Based)

**Backing**

100% Polyester

**Width**

54"

**Repeat**

App. 0.125" V

**General Characteristics**

Abrasion : 500,000+ double rubs (Wyzenbeek)†  
Hydrolysis Resistance : 15+ weeks  
- ISO1419:1995, Method C, Tropical Test  
Colorfastness to light (AATCC-16/200 hours)  
Meets or exceeds all ACT Heavy Duty Performance Guidelines for Upholstery

**Flammability**

CA Bulletin 117-2013, UFAC/NFPA-260  
IMO A652 (16) 8.2

**Maintenance**

W/S, Bleach Cleanable (10:1)

**Options**

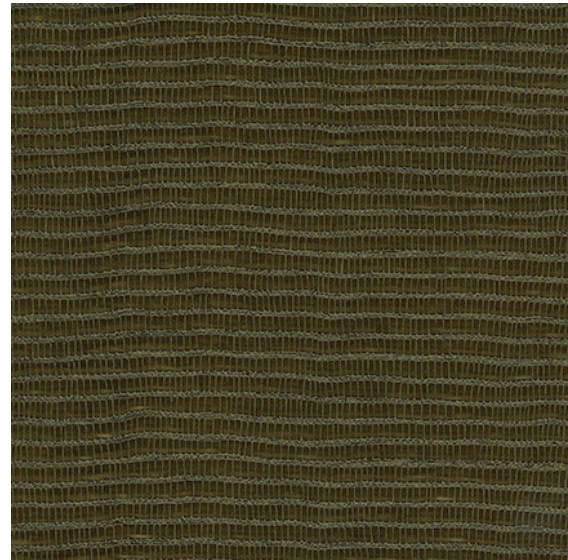
Graffiti-Free®

**Environmental**

DMF Free, PVC/Phthalates Free, FR/Anti-Microbial Free  
\*Complies with REACH, Prop 65, HHI, CAL 01350

**Warranty**

Please refer to our Terms of Sales for warranty information.



Jalapeno



† Multiple factors affect fabric durability and appearance retention, including end-user application and proper maintenance. Wyzenbeek results above 100,000 double rubs have not been shown to be a reliable indicator of increased fabric lifespan.