

# LAYERED™ CROSSINGS

## Product Specifications

Pointe.  
International

### Application

Upholstery

### Content

100% Polyurethane

### Finish

Graffiti-Free™

### Backing

100% Polyester

### Width

54"

### Repeat

App. 2-7/16" H, 2-7/16" V

### General Characteristics

Abrasion : 100,000+ Double Rubs (Wyzenbeek)†  
Hydrolysis Resistance : 10+ weeks  
- ISO1419-1995, Method C, Tropical Test  
Colorfastness to Light (AATCC-16/200 hours)  
Meets or exceeds all ACT Heavy Duty Performance  
Guidelines for Upholstery

### Flammability

CA Bulletin 117-2013, UFAC/NFPA 260  
IMO A652 (16) 8.2

### Environmental

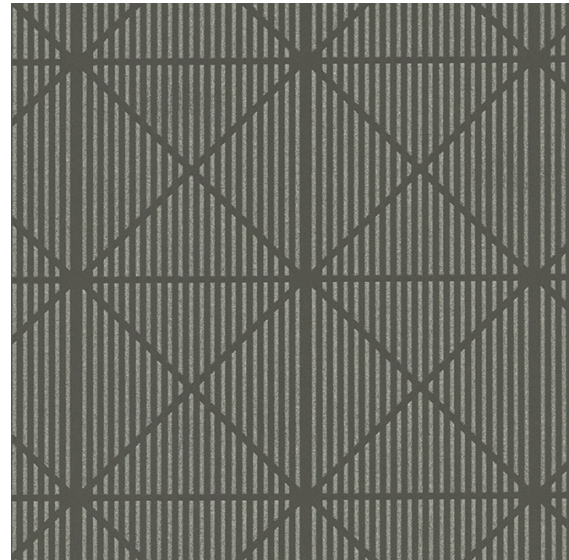
DMF Free, PVC/Phthalates Free, FR/Anti-Microbial Free  
\*Complies with REACH, Prop 65, HHI, CAL-01350

### Maintenance\*

W/S, Bleach Cleanable (4:1)

### Warranty

Please refer to our Terms of Sales for warranty  
information.



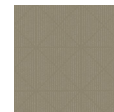
Slate



Chiffon



Pebble



Horizon



Guava



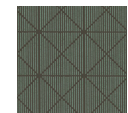
Arabica



Grass



Cadet



Tidal

\*While this product offers excellent protection against ink marks or difficult stains, full removal is not always guaranteed, if stains not addressed promptly.

† Multiple factors affect fabric durability and appearance retention, including end-user application and proper maintenance. Wyzenbeek results above 100,000 double rubs have not been shown to be a reliable indicator of increased fabric lifespan.