

ETCHED ANALOG

Product Specifications

Application

Upholstery

Content

100% Polyurethane (Polycarbonate Based)

Finish

Patented, Water Based Graffiti-Free®

Backing

100% Polyester

Width

53/54"

Repeat

App. 6.6" H, 7" V

General Characteristics

Abrasion : 100,000+ double rubs (Wyzenbeek)†

Hydrolysis Resistance : 15+ weeks

- ISO1419:1995, Method C, Tropical Test

Colorfastness to Light (AATCC-16/200 hours)

Meets or exceeds all ACT Heavy Duty Performance Guidelines for Upholstery

Flammability

CA Bulletin 117-2013, UFAC/NFPA 260

IMO A652 (16) 8.2

Environmental

DMF Free, PVC/Phthalates Free, FR/Anti-Microbial Free

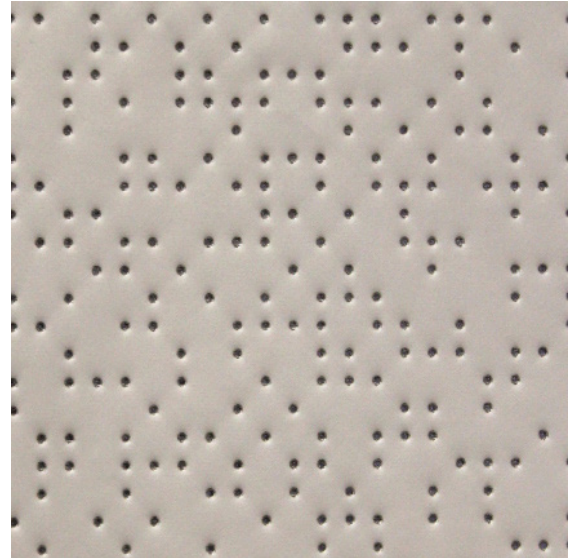
*Complies with REACH, Prop 65, HHI, CAL-01350

Maintenance*

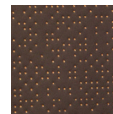
W/S, Bleach Cleanable (4:1)

Warranty

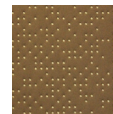
Please refer to our Terms of Sales for warranty information.



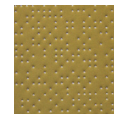
Linen



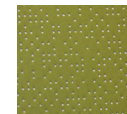
Dk espresso



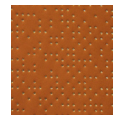
Elk



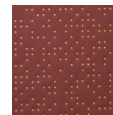
Honeycomb



Matcha



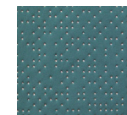
Persimmon



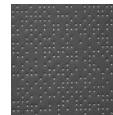
Ruby red



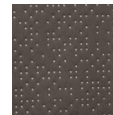
Sapphire



Sea green



Charcoal



Palladium

* While this product offers excellent protection against ink marks or difficult stains, full removal is not always guaranteed, if stains not addressed promptly.

† Multiple factors affect fabric durability and appearance retention, including end-user application and proper maintenance. Wyzenbeek results above 100,000 double rubs have not been shown to be a reliable indicator of increased fabric lifespan.