

DIMENSIONAL KALEIDO

Product Specifications

Pointe.
International

Application

Upholstery

Content

Top - 100% Polyurethane (Polycarbonate Based)
Middle – 100% Polyester Nonwoven

Finish

Patented, Water Based Graffiti-Free®

Backing

100% Polyester

Width

52"

Repeat

App. 4.5" H, 4.5" V

General Characteristics

Abrasion : 100,000+ double rubs (Wyzenbeek)†

Hydrolysis Resistance : 15+ weeks

- ISO1419:1995, Method C, Tropical Test

Colorfastness to Light (AATCC-16/200 hours)

Meets or exceeds all ACT Heavy Duty Performance Guidelines for Upholstery

Innovative Dimensional Faux Leather

Revolutionary padded, ultrasonic sealed process to achieve a three-dimensional look.

Flammability

CA Bulletin 117-2013, UFAC/NFPA 260-Class 1

IMO A652 (16) 8.2

Environmental

DMF Free, PVC/Phthalates Free, FR/Anti-Microbial Free

*Complies with REACH, Prop 65, HHI, CAL-01350

Option

ASTM E-84 F/R Treatment

Maintenance*

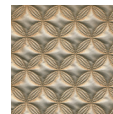
W/S, Bleach Cleanable (4:1)

Warranty

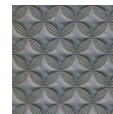
Please refer to our Terms of Sales for warranty information.



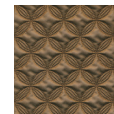
Linen



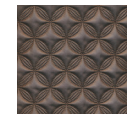
Palladium



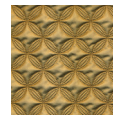
Charcoal



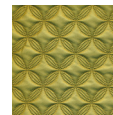
Elk



Dk. Espresso



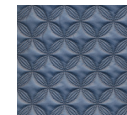
Honeycomb



Matcha



Persimmon



Sapphire

*While this product offers excellent protection against ink marks or difficult stains, full removal is not always guaranteed, if stains not addressed promptly.

† Multiple factors affect fabric durability and appearance retention, including end-user application and proper maintenance. Wyzenbeek results above 100,000 double rubs have not been shown to be a reliable indicator of increased fabric lifespan.